



OBS

Avsnittet som har med programmering av solen er fjernet.

Trenger de dette, så ta kontakt med Norsk Solariumservice AS v/ Bjørn Kvamme på tlf 94 79 20 25 eller bjorn@brunogblid.no

ONYX
pro-line


A VDL COMPANY

Owner's manual

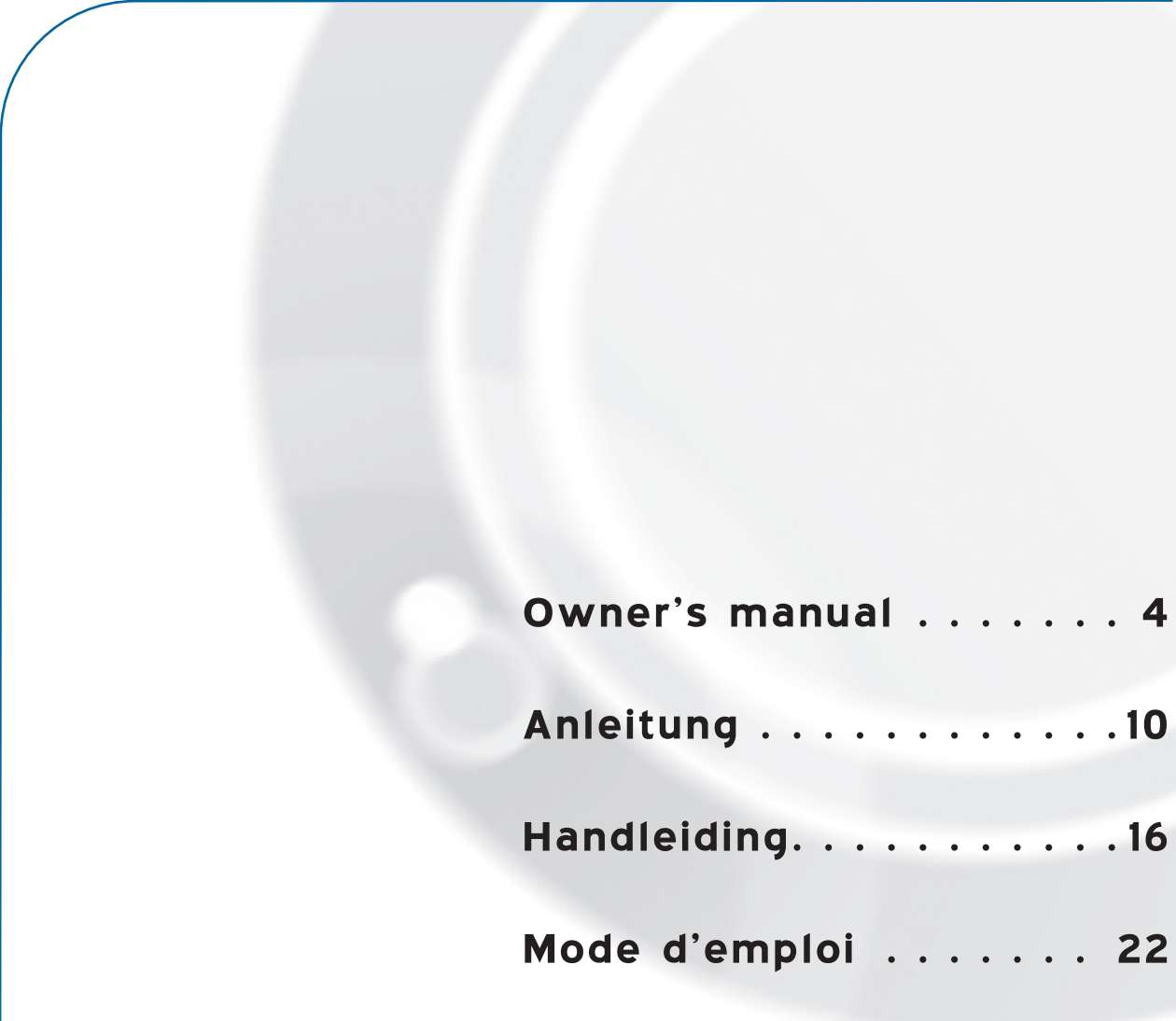
Anleitung

Handleiding

Mode d'emploi

Istruzioni per l'uso

Mode de empleo



Owner's manual	4
Anleitung	10
Handleiding.	16
Mode d'emploi	22
Instruzioni per l'uso . . .	28
Mode de empleo	34

Contents

Warranty policy	5
Read this first	6
10 Golden rules for sensible tanning in the tanning unit	7
Users instructions	
- Removing the acryl sheets	8
- Operation	9
Tanning tables	40
Line-up / Dimensions	46
Technical data	46
Assembly tanning unit	47
Electrical diagrams	57

Warranty

We would like to congratulate you on the purchase of your Onyx-Proline tanning unit and thank you for placing your trust in us.

Our tanning units are manufactured with the greatest attention and are of excellent quality. Every Onyx Pro-Line is manufactured to meet the international IEC/EN standards and carries the Kema seal of approval. We provide a manufacturer's warranty of 1 year.

The guarantee commences from the date of purchase. Within the period under guarantee we will repair free of charge, any malfunction resulting from faulty materials or manufacturing. For work to be carried out under the guarantee you should contact your dealer.

In order to make a claim under the terms of this guarantee, you must be able to produce the original invoice or receipt bearing the date of purchase. The type and serial number of the appliance should also be indicated.

The warranty is subordinate to the national regulations according to the warranty determination of products.

Not covered under this warranty:

Units which have the type, serial number and/or other identification labels removed, damaged or altered.

Lamps, starters and acrylic sheets.

Damage due to purchaser abuse, neglect, transport, improper use or improper maintenance.

Damage due to use of accessories not originally supplied by Hapro or inferior accessories.

Damage due to installation, repair or assembly not done by Hapro authorised personnel.

Damage due to fire, lightning, earth-quakes or other natural disasters.

Read this first

Note:

Please consult enclosed tanning schedule for advised tanning times.

*Repairs may only be carried out by qualified personnel.
Always disconnect the main power at the circuit breaker before servicing or repairing the unit.*

- 1 Contact your authorised Hapro dealer immediately if this unit does not function as outlined in this manual.
- 2 Do not operate this unit in a moist or humid space.
- 3 Always make sure the fuses can carry the load. This unit has to be protected by ground fault circuit interrupter (GFCI) of 0.03A.
- 4 Always disconnect the power to the unit at the wall breaker when servicing or cleaning the in-side construction of the cabine. Maintenance for which the procedure is not described in this manual should only be done by a qualified electrician. Never clean the electrical components with fluids.
- 5 Ensure that the canopy when opened does not touch the wall. This will prevent damage.
- 6 Avoid having the acrylic sheets come into contact with sharp objects.
- 7 This unit may not be operated if:
 - the user is not wearing protective uv-goggles
 - the blue or white facial glass is cracked or broken
 - the acrylic panel in the canopy and/or bed is present
 - one or more of the fans in the unit are not functioning properly
 - the timing mechanism is not functioning properly
 - the temperature inside the cabin is 30°C or higher
- 8 To ensure maximum tanning effectiveness, change the acrylic sheet after every 1200 hours of operation.
- 9 To ensure maximum tanning effectiveness, replace the lamps and the facial tanning lamps like indicated by the manufacturer.
- 10 Check the environment regulations of your respective state with regard to the proper manner in which the lamps are to be disposed of.
- 11 Note: only a special acrylic cleaner may be used to clean the acrylic sheet. Never use cleaners that contain alcohol, as these can damage the acrylic sheet.
- 12 The UV-type of the tanning unit is indicated on the specificationsticker.
- 13 Ultraviolet radiation from the sun or UV appliances can cause skin or eye damage. These biological effects depend upon the quality and quantity of the radiation as well as the skin and eye sensitivity of the individual.
- 14 The skin may develop sunburn after an excessive exposure. Excessively repeated exposures to ultraviolet radiation from the sun or UV appliances may lead to premature ageing of het skin as well as increased risk of development of the skin tumours.
- 15 The unprotected eye may develop surface inflammation and in some cases, after a cataract operation for example, damage may occur to the retina after excessive exposure. Cataracts may develop after many repeated exposures.
- 16 If the supply cord is damaged, it must be replaced by the manufacturer or its service agent or a similarly qualified person in order to avoid a hazard.
- 9 Exchanging lamps and starters: remove the lamp by turning this a quarter turn to the left. Remove the starters by turning these a quarter turn to the left. Placement of lamps and starters in opposite order.

10 Golden rules for sensible tanning

These rules are in accordance with the European regulations concerning safe use of tanning equipment. We advise you to inform your clients about these rules.

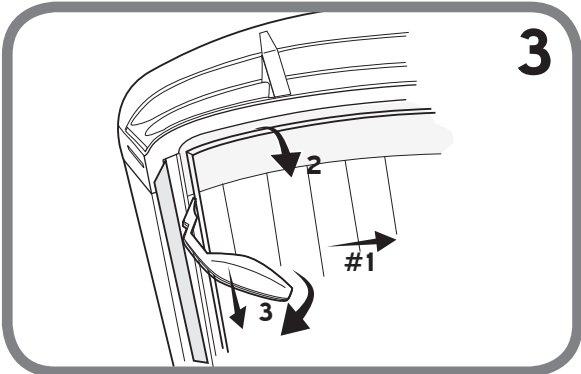
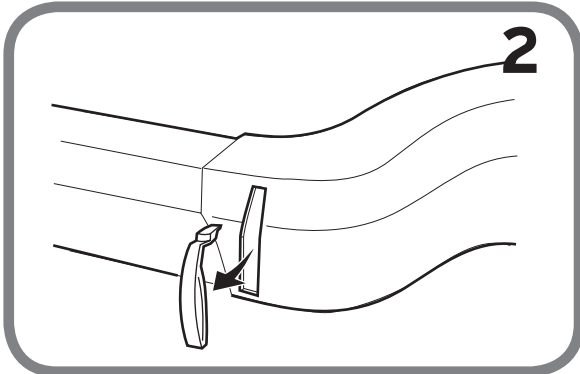
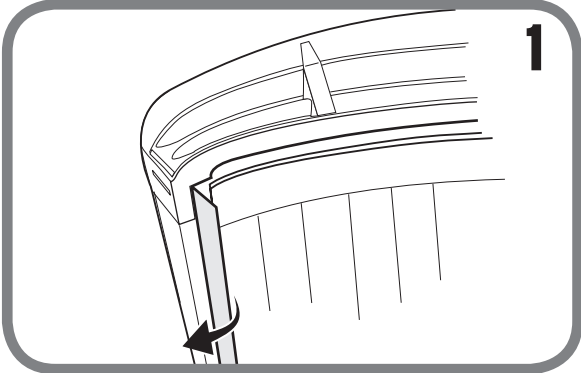
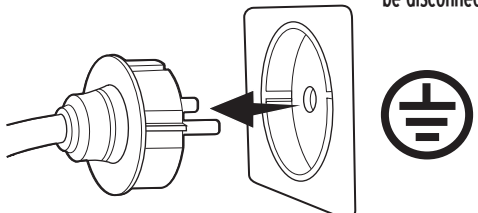
Note:

If your customers are using medication, ask them to consult their doctor before embarking on a series of tanning sessions.

- 1 Before your client takes his or her tan in a tanning unit first consult thoroughly the tanning table that you will find in this book and follow its recommendations.
 - Musk ambrette, musk oil - in perfumes
 - Bleaching agents - in washing powders/liquids
 - Eosine - in colourings
 - Halogenated salicylamide - in antifungal substances
- 2 People have different reactions to sunlight. Somebody with a pale complexion should take more care when tanning than somebody with a darker complexion. Sun beds should not be used by people:
 - Whose skin displays signs of burning due to the simple fact of being exposed to sunlight.
 - Who have already been burned by the sun.
 - Who have a skin condition or have or have had skin cancer.
 - Who are younger than 16 years.With skin type 1.
- 3 Make sure that upon commencing a series of tanning sessions your customers have a rest day following their first tanning session. If there is no sign of any undesirable skin reaction they can then continue with the series of sessions.
- 4 Make sure that your customers do not tan more than once a day. This applies to tanning on the sunappliance and tanning in natural sunlight. The skin does not make a distinction between the two either. Taking exposure to natural sunlight into account.
- 5 Some medicines and beauty products contain substances which can cause certain undesirable reactions when combined with exposure to UV radiation. Other substances may also sometimes have a similar effect. Below you will find a list of substances which can react when combined with exposure to UV radiation:
 - Sulphonamide - in various medicines including antibiotics
 - Tetracyclines - in antibiotics, antiacne preparations
 - Nalidixine acid - in medication for infection of the urinary passages
 - Chlorothiazide - in diuretics
 - Sulphonylurea - in diabetic medication
 - Phenothiazines - anti-stress medication
 - Triacetyldiphenylisatine - in laxatives
 - Psoralenes - in tanning accelerators
 - Cyclamates - in sweeteners
 - Para-aminobenzoic acid (PABA) - in sun protection creams/oils
- 6 When combined with exposure to ultraviolet light, cosmetic products - perfumes and make-up, can cause the skin to react. So take care to ensure that your customers skin is clean before tanning. Some products penetrate deep into the skin. Advise your customers to ensure that their skin is clean when tanning. Recommend that they clean their skin thoroughly a few hours before each tanning session, or better still, recommend that they wear no make-up at all the day before. Also advise your customers to remove any jewellery before tanning.
- 7 Make sure that your customers do not use cream or oil that contains a sun block or self-tanning lotion when using the tanning equipment. These products contain substances which influence tanning times and thus make the prescribed times unreliable. Also make sure that your customers do not use tanning pills in combination with a series of tanning sessions or exposure to natural sunlight. The combination of tanning pills and UV light can increase the possibility of skin irritation and sunburn.
- 8 If the skin is red and taut a short time after the tanning session it is likely to be sunburnt. Wait for these symptoms to disappear before tanning again, revise the tanning plan and reduce the length of the individual tanning sessions for the customer in question. If tanning gives rise to undesirable reactions that you cannot explain, stop the series of tanning sessions and advise your customer to see their doctor if the symptoms do not disappear within a short space of time.
- 9 Make sure that your customers always wear protective goggles to protect their eyes - even if you may have seen pictures of people tanning without using these goggles. UV light which directly enters the eyes can cause eye disorders (snow blindness, actinic conjunctivitis or cataracts).
- 10 Reduce the tanning time by 20% during the first 50 hours that the (new) sunappliance is in use. During these first 50 hours the tubes do not emit the normal 100% energy but 120% energy. After the first 50 hours the tubes will emit the normal capacity of between 95% to 100%.

Removing the acrylic sheets

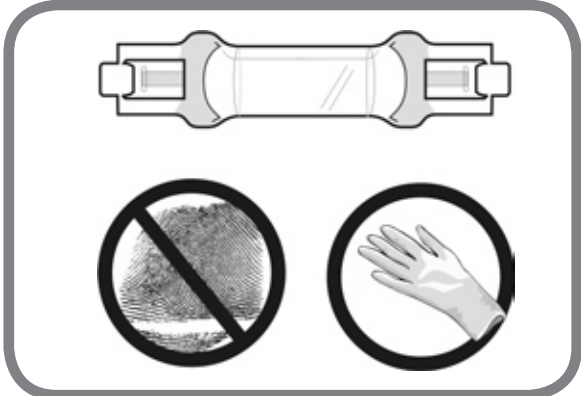
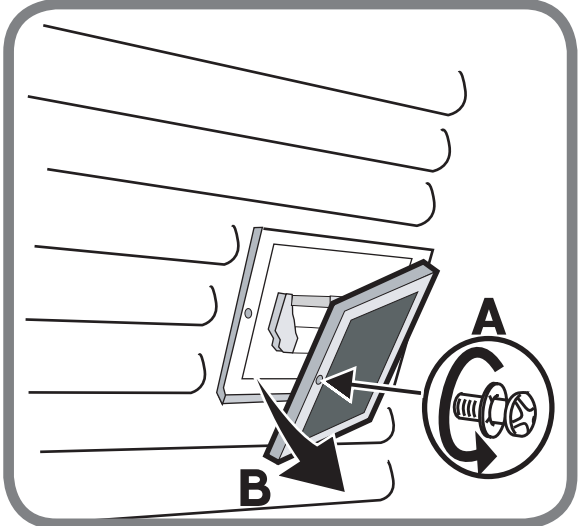
Warning!
Before obtaining access to terminals, all supply circuits must be disconnected.



First push the acrylic panel away by hand.

Remove face tanners.

1 Loosen the cross-slotted screw (A) as indicated and snap open the blue filter window (see B).



Operation

Operation

A Start

Stand-alone mode:

By depressing start once the “+” and “-” buttons can be used to set the tanning time. Pressing for a second time will start the unit.

Coin mode:

The unit can be started automatically by the external timer or the coin automat. The start button can be used only when the unit has to be restarted from “pause”.

B Stop

Stand-alone mode:

Pressing stop once will cause the unit to “pause”. The lights will go out but the ventilation will continue to run.

Pressing stop twice will initiate a mandatory after-cooling phase of 3 minutes. The unit cannot be started during these 3 minutes.

Coin mode:

Pressing stop once will cause the unit to “pause”. The lights will go out but the ventilation will continue to run.

The unit will not respond to pressing stop several times. The external timer or coin automat will switch the unit off. Switching off will initiate a mandatory after-cooling phase of 3 minutes. The unit cannot be started during these 3 minutes.



Illustration after-cooling

C Stand-alone mode:

Stand-alone mode:

- Reduce tanning time
- Reduce body cooler speed

Coin mode:

- Reduce body cooler speed

D Stand-alone mode:

Stand-alone mode:

- Increase tanning time
- Increase body cooler speed

Coin mode:

- Increase body cooler speed

E Face

Switch the face tanner on and off

F Fan

Switch the body cooler on and off



OBS

Avsnittet som har med programmering av solen er fjernet.

Trenger de dette, så ta kontakt med Norsk Solariumservice AS

v/ Bjørn Kvamme på

tlf 94 79 20 25 eller bjorn@brunogblid.no

Display messages:



Overrule error (Switch print and/or display print defect)



Filter glass defect (Filter glass of the face tanner is broken or glass protection is defective)



Communication error (No communication between switch print and display print)



Note: When you receive one of the above error messages on your LCD display, you should stop using the unit and remove the plug from the socket. Contact your dealer.



This symbol will appear on the lcd display after 500 tanning hours. It is preferable after 500 tanning hours to replace the lamps with new. After replacing the lamps reset the lamp hour counter.

Note: On the label on the back of the unit the lamps are stipulated that are suitable for your unit.

Sundry:



Hour counter lamps x 10



Reset hour counter lamps



Hour counter sun bed x10

Tanning tables

Skin types	fair-skinned (II)	average (III)	dark-skinned (IV)	
	normal tanning	fast tanning	fast tanning	
	mostly	rarely	rarely	
UV-type 3 All lamps are Important: Values only apply to mentioned lamps. See marking on the backside of the application For replaceable emitters: See also marking on the backside of the application.	1st session (min)	5	5	5
	2nd session (min)	5	6	7
	3rd session (min)	6	7	9
	4th session (min)	7	8	11
	5th session (min)	7	9	13
	6th session (min)	8	11	16
	7th session (min)	9	12	18
	8th session (min)	9	13	20
	9th session (min)	10	14	22
	10th session (min)	11	16	25
UV-type 4 All lamps are Important: Values only apply to mentioned lamps. See marking on the backside of the application For replaceable emitters: See also marking on the backside of the application.	1st session (min)	3	3	3
	2nd session (min)	3	3	4
	3rd session (min)	3	4	5
	4th session (min)	4	5	7
	5th session (min)	4	6	8
	6th session (min)	4	6	9
	7th session (min)	5	7	11
	8th session (min)	5	8	12
	9th session (min)	5	9	13
	10th session (min)	6	10	15
Max. tanning sessions a year	60 (15kJ/m ²)	43 (15kJ/m ²)	33 (15kJ/m ²)	

Warning!: allow at least 48 hours between the first two exposures.

Warning!: UV-type 4 may only be used following medical advice.

Dimensions

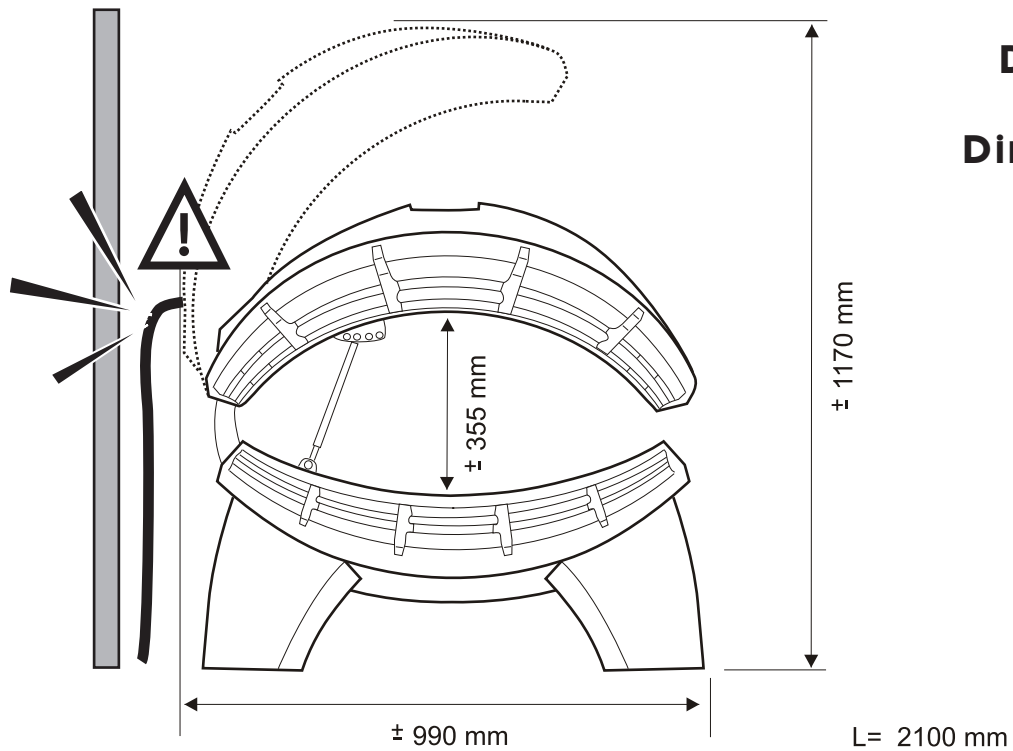
Abmessungen

Afmetingen

Dimensions

Dimensioni

Dimensiones

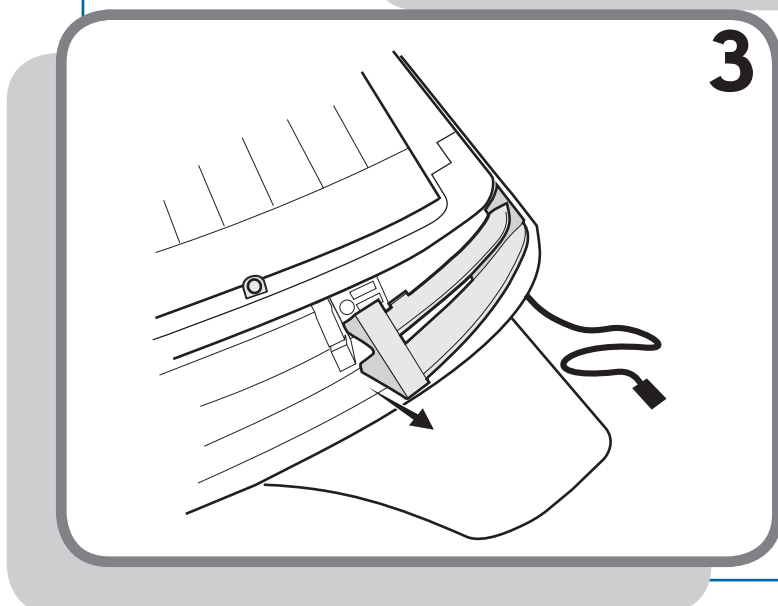
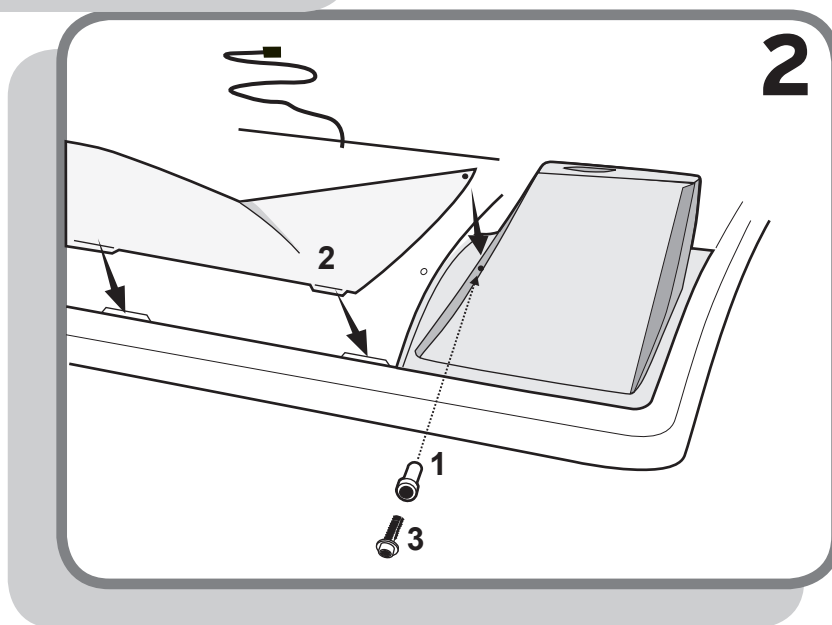
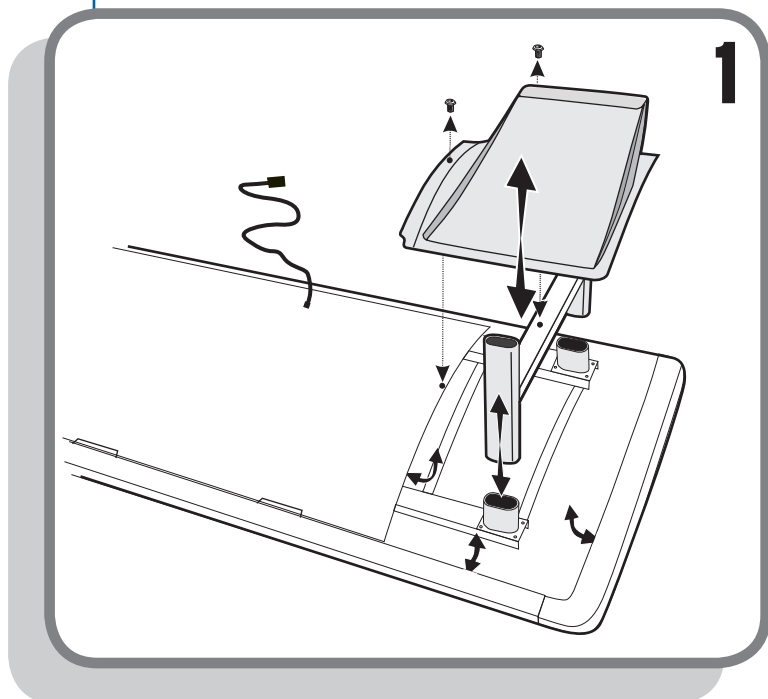


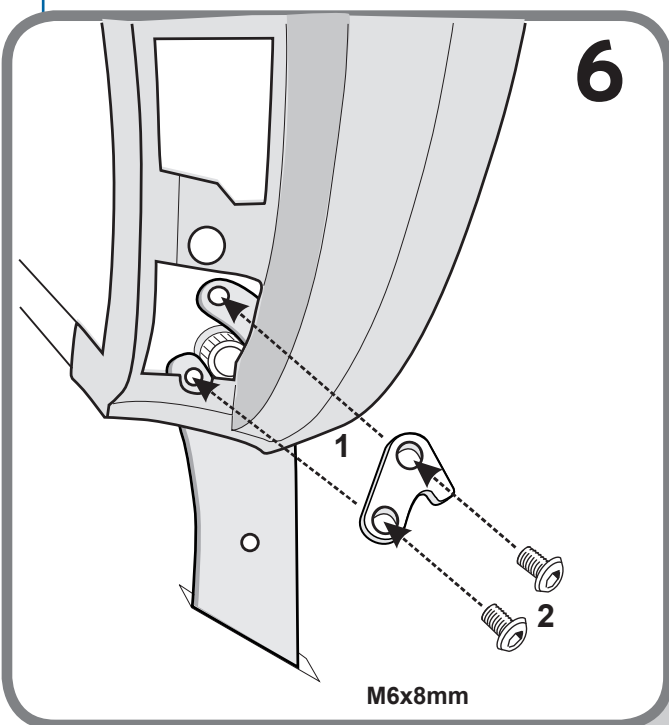
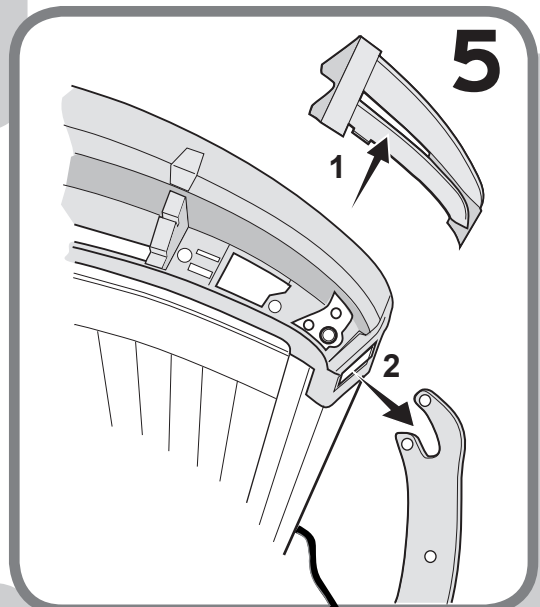
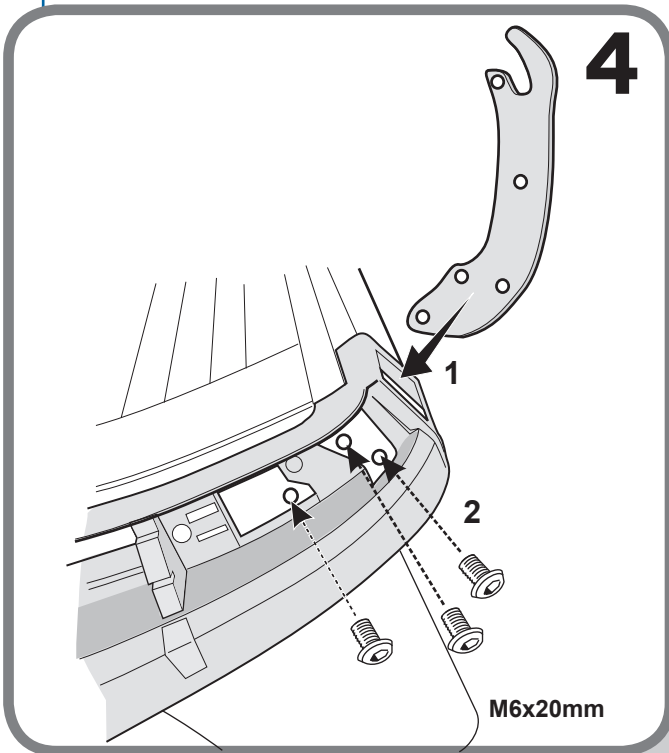
Onyx Pro-Line 28-1

Voltage	(Fuse)	Wattage
230V/1-N/PE/50Hz	16A	3,26kW

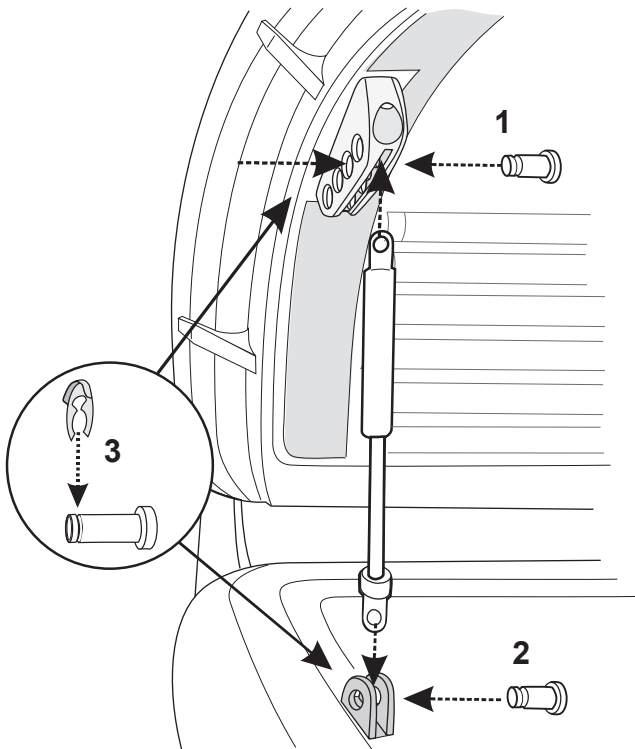
Numbered Wattage of lamps =
22 x 80W 150cm
6 x 100W 190 cm
1 x 300W

Weight	120 kg
--------	--------





7

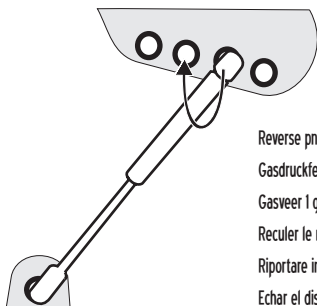


- Setting pneumatic springs where appropriate
- Bei Bedarf Gasdruckfedern einstellen
- Eventueel afstellen gasveren

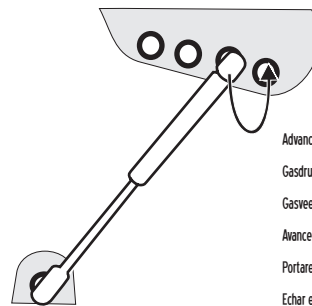
- Régler éventuellement les ressorts à gaz
- Eventuale regolazione delle sospensioni
- Eventualmente ajustar los dispositivos de elevación por gas

Sun canopy rises spontaneously
 Sonnenhimmel bewegt sich von selbst nach oben
 Zonnehemel gaat vanzelf omhoog
 Le ciel monte lui-même
 Il cielino si alza da solo
 La parte superior del solarium se eleva sola

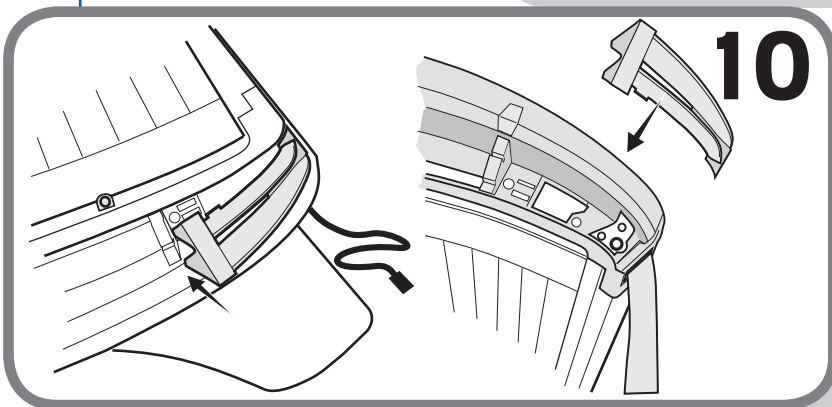
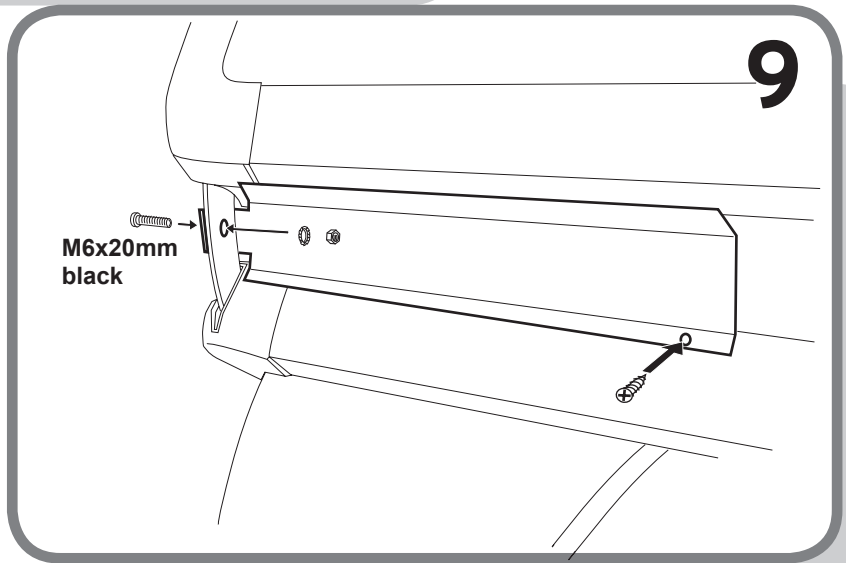
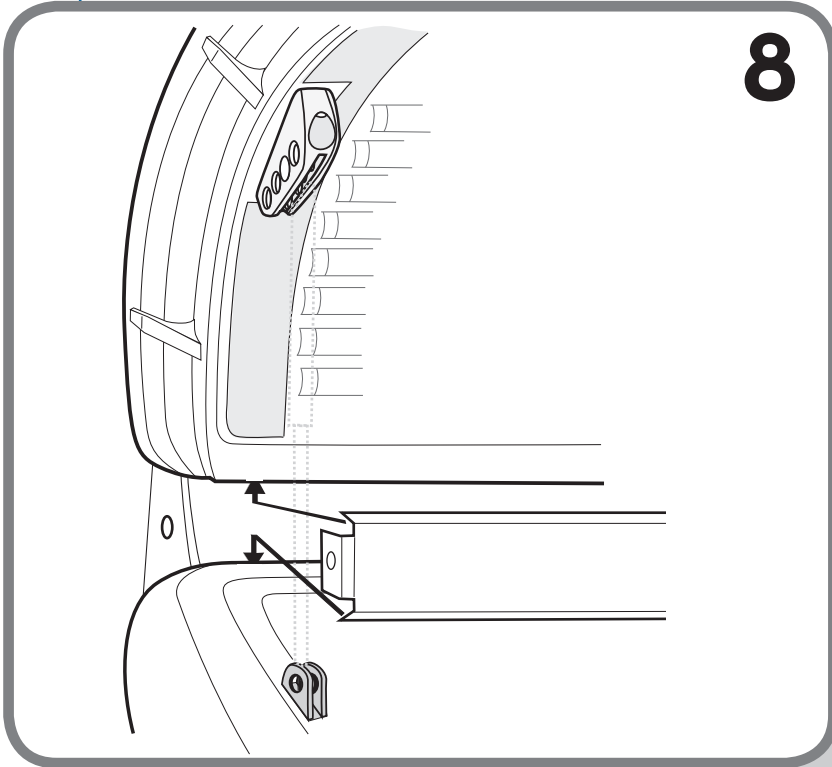
Sun canopy lowers spontaneously
 Sonnenhimmel bewegt sich von selbst nach unten
 Zonnehemel gaat vanzelf omlaag
 Le ciel descend lui-même
 Il cielino si abbassa da solo
 La parte superior del solarium se baja sola



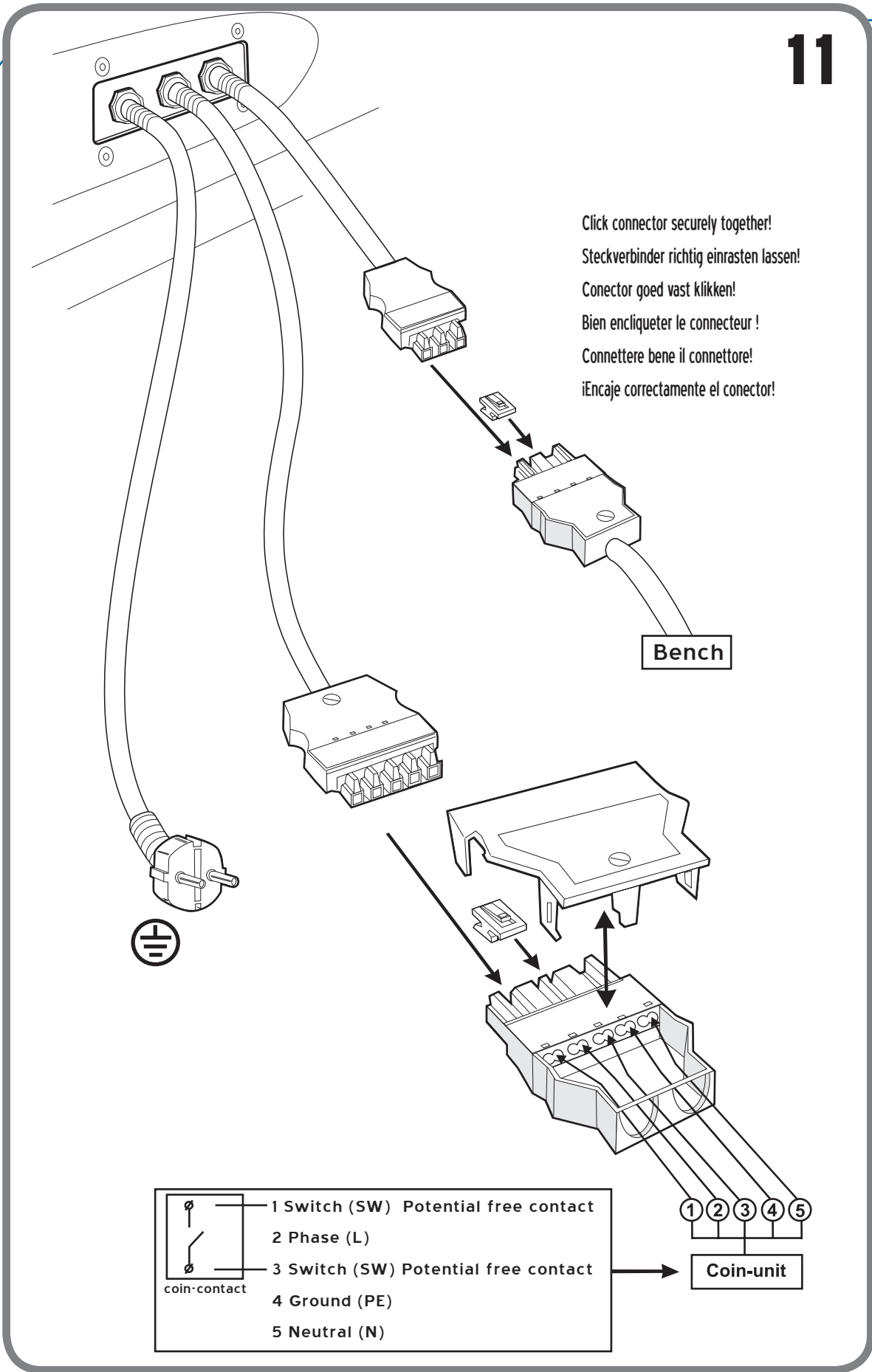
Reverse pneumatic spring 1 aperture
 Gasdruckfeder 1 Loch zurück stellen.
 Gasveer 1 gat terug plaatsen
 Reculer le ressort à gaz d'un trou.
 Riportare indietro di 1 foro la sospensione
 Echar el dispositivo de elevación por gas 1 agujero hacia atrás.



Advance pneumatic spring 1 aperture
 Gasdruckfeder 1 Loch nach vorn stellen.
 Gasveer 1 gat naar voren plaatsen plaatsen
 Avancer le ressort à gaz d'un trou.
 Portare in avanti di 1 foro la sospensione.
 Echar el dispositivo de elevación por gas 1 agujero hacia adelante.

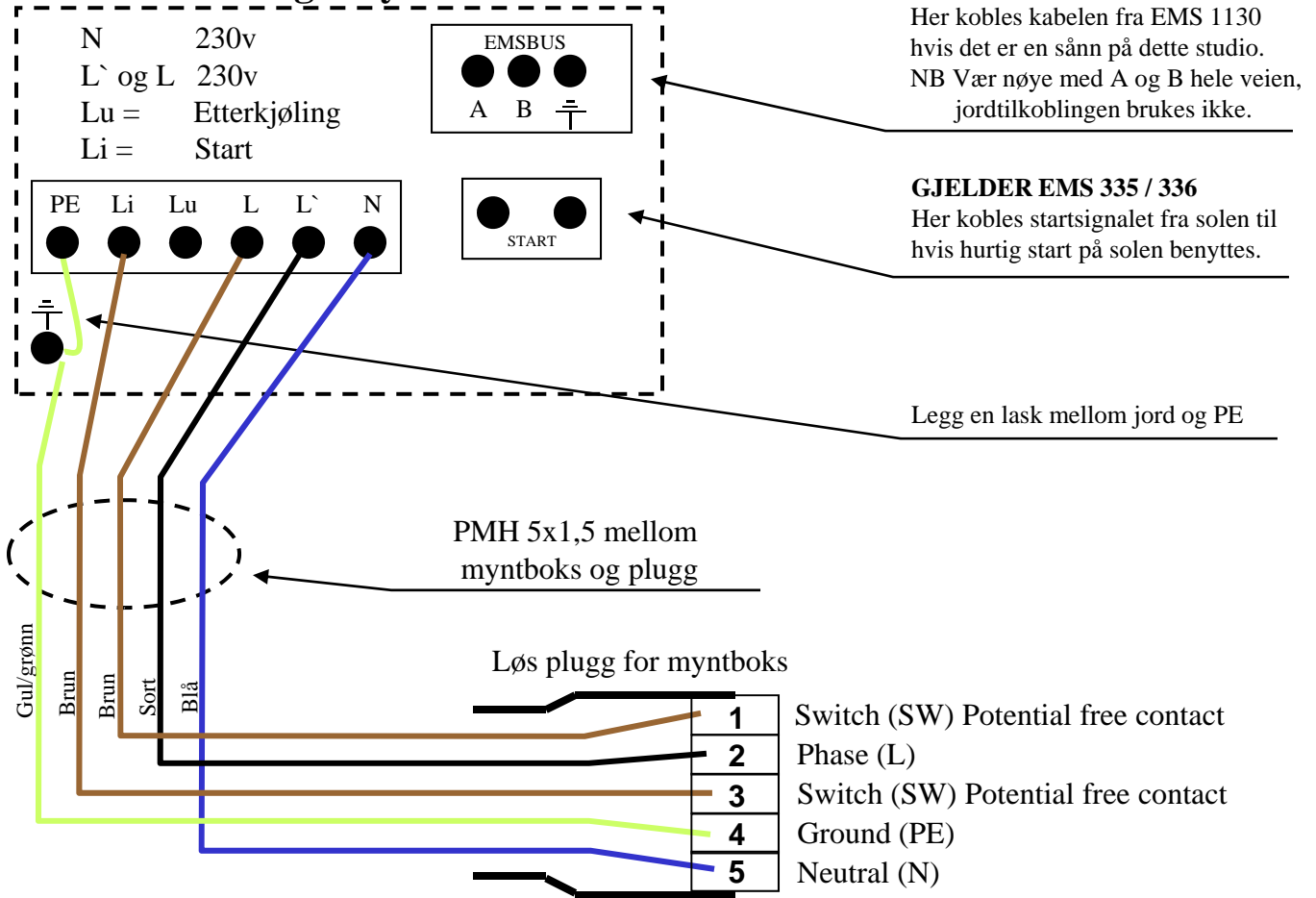


11



Onyx ProLine til bruk mot EMS 111 og 336

Kobling i myntboks



Programmering

OBS:

Hvis solen ikke starter på signal fra myntboksen, er det pga den står innstilt på "stand-alone" i programmet!

For at den skal brukes mot myntboks, må "stand-alone" være stilt til 0

Dette er lett å teste, for starter solen når du trykker på "start" knappen 2 ganger er den ikke satt opp for bruk mot myntboks.

Koden og programmet får dere av Bjørn, se side 1

Electrical diagrams

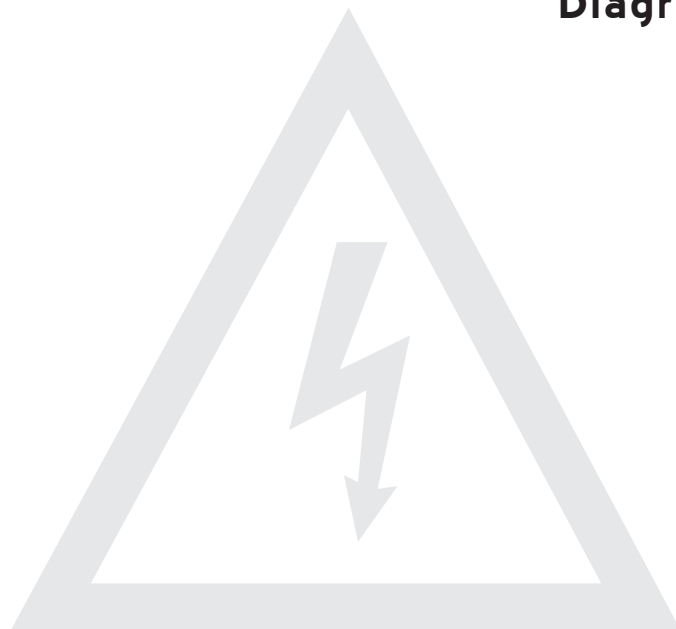
Schaltpläne

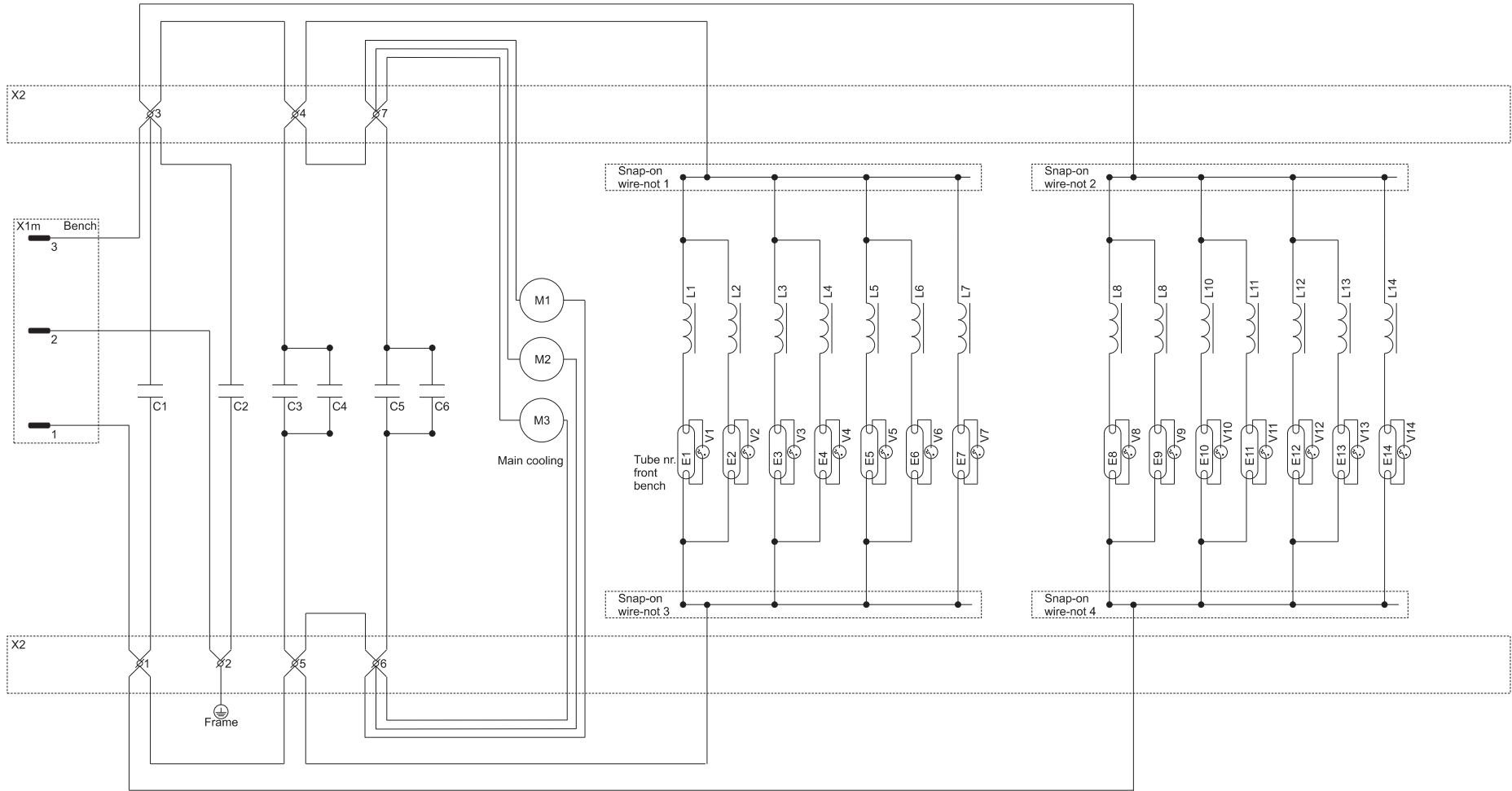
Elektrische schema's

Schéma électrique

Diagramma elettrico

Diagrama eléctricas





Legenda:

- X1m=Bench connector male
- X2=Screw connector
- M1-M3=Main fan
- C3-C6=45uF condensator
- C2=0.033uF Y-capacitor
- C1=1uF X-capacitor
- L1-L14=80W ballast
- E1-E14=100W lamp
- V1-V14=Cleo ignitor

Manufacturer:

Hapro International b.v.,
Kapelle, The Netherlands.
www.hapro.com

Product identification:

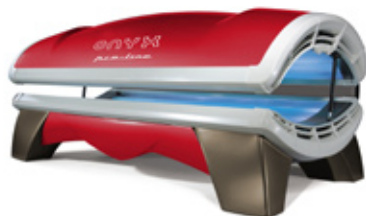
Product: Tanning equipment
Model: Onyx Proline
Type: Combination: 28/1

Means of conformity:

The products are in conformity with Directive 89/336/EC of the European Community and the Low-Voltage Directive 73/23/EEC of the European Community of February 19th, 1973.

Testing, Electro-Magnetic Compatibility:

Carried out by: Bolborn EMC Solutions b.v.,
Bornerbroek, The Netherlands
Standards used: All relevant standards which result from the
directive 89/336/EC



Testing, Low-Voltage Directive:

Carried out by: Hapro Laboratory,
Kapelle, The Netherlands
Standards used: EN 60 335-1: 94, EN 60 335-2-27: 97

KEMA no.: 2079459.01
KEYMARK no.: 2079459.02

Declaration of conformity

13791_00



Representative:

Name: R. T. B. Henkemans
Function: Managing Director

Date: 21-01-2005

Signature:

